

# Product Data Sheet

**PRODUCT NAME:**  
SinoCore<sup>®</sup>  
Prefinished Architectural Panels

**DISTRIBUTOR:**  
Eastern Glass Resources Inc.  
770 Supor Blvd  
Harrison, New Jersey 07029  
phone: (973) 483-8411  
(866) 318-7896  
fax: (973) 482-2717

web: [www.eglassr.com](http://www.eglassr.com)  
email: [info@eglassr.com](mailto:info@eglassr.com)

## PANEL & SYSTEM DESCRIPTION

**OVERVIEW:**  
SinoCore<sup>®</sup> is a composite panel made by laminating either textured or smooth prefinished aluminum skins to a core of high density polypropylene. A second aluminum skin is added as a backer and provides panel balance.

Panels are furnished with a strippable film (or interleaved microfoam) on the painted surfaces to protect the finish during shipment and installation.

SinoCore<sup>®</sup> is attached to the substrate using either mechanical fasteners or construction adhesive, depending upon the method selected. Joints are finished using one piece or two piece extruded aluminum trim moldings.

**BASIC USES & APPLICATIONS:**  
As an alternative or complement to other exterior building finishes such as stucco or brick, SinoCore<sup>®</sup> is designed for applications such as: claddings, fascias, canopies, and accent bands.

SinoCore<sup>®</sup> is typically used on low and medium rise buildings such as schools, banks, office parks, medical facilities, etc... However, with a variety of finish options, SinoCore<sup>®</sup> also adds aesthetic interest to otherwise monolithic structures (i.e. preformed warehouse walls).

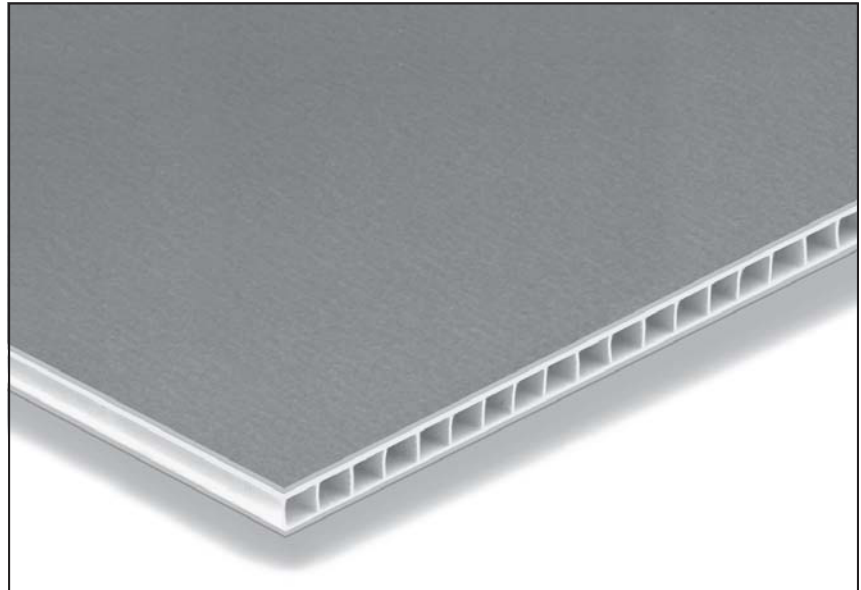


TABLE 1. COMPOSITION & MATERIALS<sup>1</sup>:

Component	Standard (in)	Metric (mm)
• Prefinished Textured Aluminum Face (or) Prefinished Smooth Aluminum Face	.010" .024" (min)	.254mm .609mm
• High Density Polypropylene Core	5/32"	4.00mm
• Primed Smooth Aluminum Backer (or) Primed Smooth Aluminum Backer	.010" .024"	.254mm .609mm

<sup>1</sup> Technical Properties are based upon the Typical Composition. Selecting optional components may alter these properties.

### FEATURES & BENEFITS:

As a complete exterior cladding system, SinoCore<sup>®</sup> offers a number of benefits to the building owner, architect, and installer including:

- **Lightweight**  
With an innovative polypropylene core, SinoCore<sup>®</sup> is lightweight making it easier to handle, cut in-the-field, and install.
- **Easy Installation**  
Simple sheets/trim concept easy to understand. Standard carpentry knowledge and tooling is all that is required for installation.
- **Curveable**  
While tight radius requirements are not recommended with SinoCore<sup>®</sup>, panels can be gently curved in-the-field to achieve graceful lines.
- **Color Matched Moldings**  
Several different profiles available to complete the system look. Moldings are painted to color match or complement panels.
- **Versatile**  
With textured or smooth skins available, SinoCore<sup>®</sup> can provide a number of different looks for your project including metallic and anodized finishes.
- **Water Resistant**  
Virtually unaffected by water, SinoCore<sup>®</sup> provides an attractive alternative for situations where moisture is a primary concern.

**GENERAL LIMITATIONS:**

SinoCore<sup>®</sup> is intended for use as a lightweight exterior cladding. It should not be used in low grade areas where panels are exposed to high traffic and/or heavy abuse. It cannot be considered as a structural element of a wall assembly.

**SYSTEM FINISHES:**

SinoCore<sup>®</sup> panels are available with either smooth or textured prefinished aluminum skins. Standard colors in textured skins are offered with a coil coated polyester. Panels can also be ordered in premium colors with an acrylic urethane coating.

Smooth standard and metallic colors are furnished with a Kynar 500<sup>®</sup> coating. Anodized finishes are available as a standard finish. Custom colors are also available.

Moldings are coated using a polyester, acrylic urethane or Kynar 500<sup>®</sup> paint system depending upon the panel finish and can be painted to match any standard or custom color.

**INSTALLATION OVERVIEW**

**MECHANICAL FASTENING:**

For a non-progressive installation, the two piece extruded moldings may be used. Plastic receivers are first installed, then construction adhesive is placed in the field of the panel. The panels are then fastened around the perimeter and sealant is applied. The joints are completed with a snap-on aluminum cover.

**NON-MECHANICAL FASTENING:**

For a progressive installation, the one piece moldings are used. The extrusions are mechanically fastened to the substrate and the panels are then installed using sealant at the perimeter and construction adhesive in the field of the panel.

TABLE 2. PANEL WEIGHT & THICKNESS :

Component	Standard	Metric
Panel Weight <sup>1</sup>	0.81 lbs/ft <sup>2</sup>	3.93 kg/m <sup>2</sup>
Nominal Thickness	3/16"	4mm

TABLE 3. PANEL PERFORMANCE :

Property	Test	Value	Unit
R-Value	---	1.16	°F ft <sup>2</sup> /BTU
Flame Spread	ASTM E84	Class A	---
Stiffness (EI) <sup>1</sup>	ASTM E72	2.59 E+4	lb-in <sup>2</sup> /ft width
Allowable Bending Moment <sup>1</sup>	ASTM E72	2.63 E+1	lb-ft/ft width
Tensile Yield <sup>1</sup>	ASTM E72	7.34 E+3	lb/ft width
Ultimate Tensile <sup>1</sup>	ASTM E72	1.04 E+4	lb/ft width

<sup>1</sup> Weight and testing based upon panels using an .024" smooth face skin and an .010" smooth back skin.

**MATERIAL TOLERANCES:**

Thickness: ±1/32" (±0.79mm)  
 Length Dim: +0, -1/8" (+0, -3.18mm)  
 Width Dim: +0, -1/8" (+0, -3.18mm)  
 Squareness: 1/64" (0.4mm) per lineal foot

**SIZES AVAILABLE:**

48" x 96" (1219mm x 2438mm)  
 48" x 120" (1219mm x 3048mm)  
 48" x 144" (1219mm x 3658mm)  
 60" x 96" (1524mm x 2438mm)  
 60" x 120" (1524mm x 3048mm)  
 60" x 144" (1524mm x 3658mm)

SinoCore<sup>®</sup> is supplied with clean, machine trimmed edges.

Cut-to-size panels are also available in virtually any size up to 60" x 144".

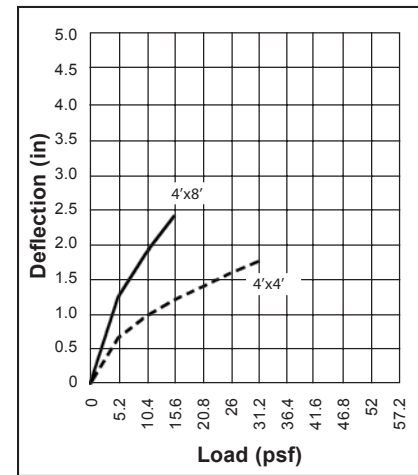
**PANEL FINISH SYSTEMS:**

Standard Textured: Coil Coated Polyester  
 Custom Textured: Spray Applied Acrylic Urethane  
 Standard Smooth: Coil Coated Kynar 500<sup>®</sup>  
 Custom Smooth: Spray Applied Kynar 500<sup>®</sup>

**STANDARD WARRANTY:**

Panel Warranty: 5 Years  
 Polyester/Acrylic Finish: 5 Years  
 No change greater than 6 for chalk, 8 E units for fade  
 Kynar 500<sup>®</sup> Finish: 20 Years  
 No change greater than 8 for chalk, 5 E units for fade  
 Anodized Finish: 20 Years (prorated)

**LOAD DEFLECTION<sup>1</sup>:**



<sup>1</sup> Panel tested while supported on four sides.